



Chandler Road, Loughton, IG10

BUTLER & STAG



This well presented first floor one bedroom apartment is situated on a popular road in Loughton.

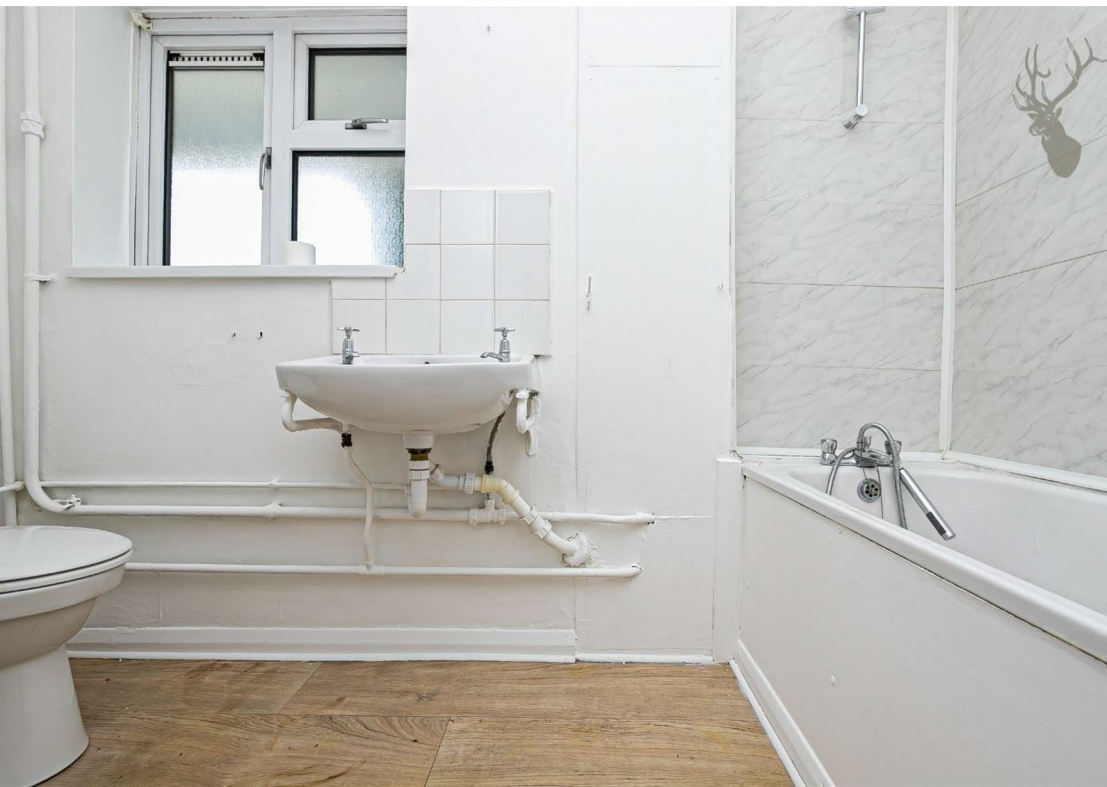


- First Floor Flat
- Private Garden
- Balcony
- Available Now
- One Bedroom
- Spacious Living Room
- Ample Storage
- Redecorated

Internally the property offers good storage with a spacious lounge, a good size bedroom, separate kitchen, with a family bathroom. There is also an added benefit of a balcony with lovely views over the private garden.

Chandler Road is ideally situated for local schools, with Hereward Primary School, Davenant Foundation and Debden Park High School all a walk away. Debden Broadway and Central Line Station are equally close by. Loughton is a particularly sought after area due to its schools, transport links and shops, with Epping Forest on the doorstep. The Central Line gives easy access to the City, Canary Wharf and West End, and for road users, the M25, M11 and routes into London are conveniently close by.

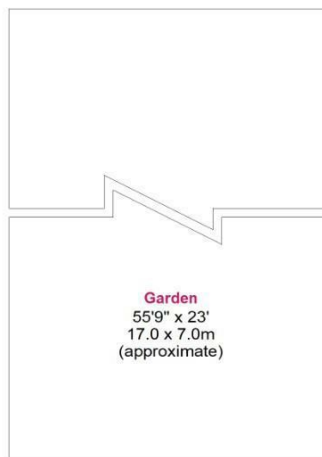




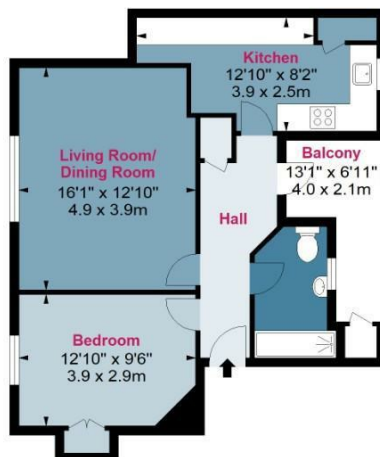
Chandler Road, IG10

Approx. Gross Internal Area 589 Sq Ft - 54.72 Sq M

BUTLER & STAG



Ground Floor



First Floor

Floor Area 589 Sq Ft - 54.72 Sq M

Floor plan is for illustrative purposes only and is not to scale. Every attempt has been made to ensure the accuracy of the floor plan shown, however all measurements, fixtures, fittings and data shown are an approximate interpretation for illustrative purposes only.
lpaplus.com

BUTLER & STAG

☎ 01992 667666

🏠 4 Forest Drive, Theydon Bois, Essex, CM16 7EY

✉ theydon@butlerandstag.com

IMPORTANT NOTICE - These particulars have been prepared in good faith and they are not intended to constitute part of an offer or contract. We have not performed a structural survey on this property and the services, appliances and specific fittings have not been tested. All photographs, measurements, floor plans and distances referred to are given as a guide and should not be relied upon.

www.butlerandstag.uk